

PIC-011

Ethernet to RS232



Description

PIC-011 Ethernet to RS232 converter, allows you to integrate your existing RS232 enabled equipment into your Ethernet network. The module can be configured to suit your mounting needs.

Ethernet to RS232 transceiver module embedded on a miniature 40x40mm PCB board. The module can accept a wide range of input voltage ranging from 5Vdc to 24Vdc, up to a maximum of 60Vdc (high voltage version).

Features

1. Easy to integrate into your existing electrical system, accepting input ranging from 5V, 12V, to 24V.
2. Smallest configuration size measuring 40 x 40 x 18mm (L x W x H).
3. Configurable for DCE (Device) or DTE (PC) use.
4. Configurable IP address/port, network mask, RS232 settings.
5. Designed for mounting RS232 socket on the top/bottom of the PCB.
6. RS232 D-Sub connector (90°/Straight PCB mount, male/female)
7. Pluggable screw terminal for the power supply input.
8. Hole mount for your chassis enclosure and electrical DB junction box.

Configuration

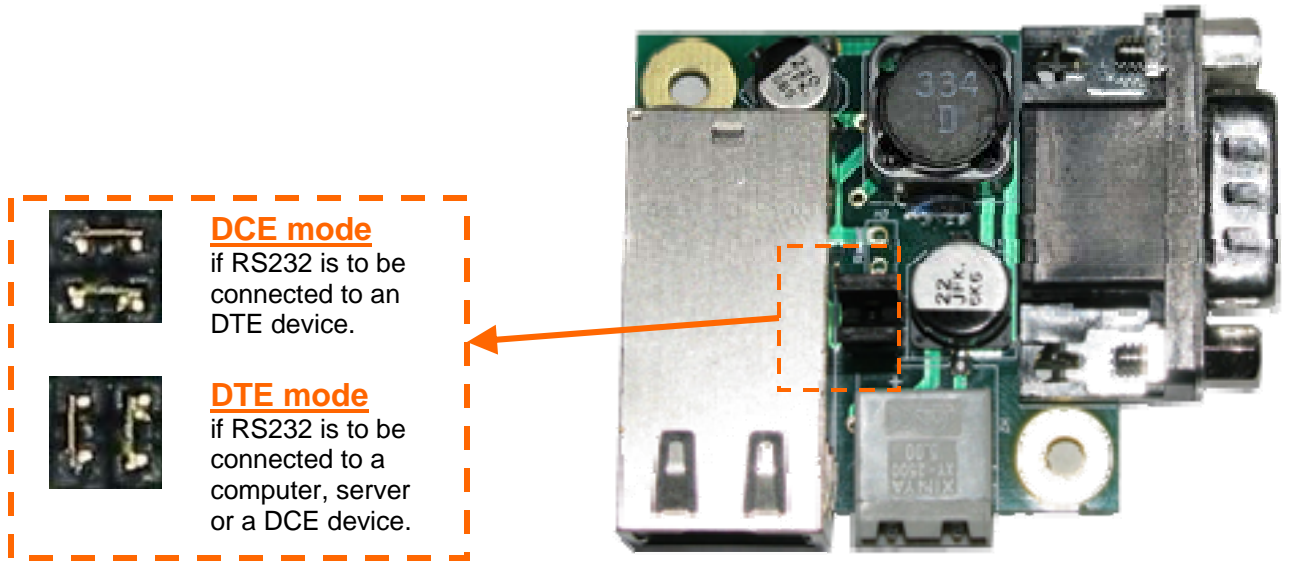
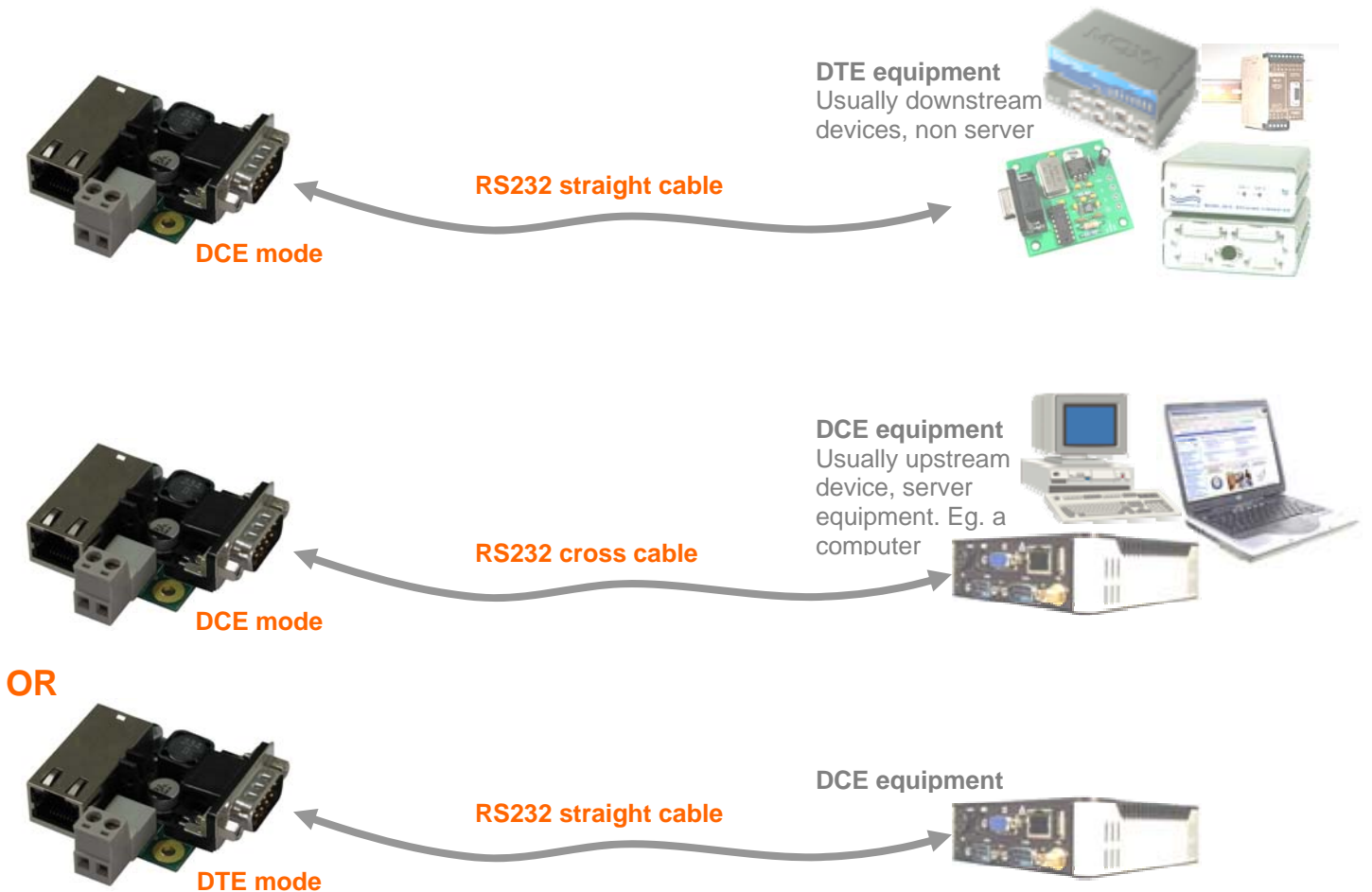


Fig: Jumper configuration





 <p>DB9 connector (right angle) Top of the PCB.</p>	<p>Picture not available</p> <p>DB9 connector (straight) Top of the PCB.</p>
<p>Picture not available</p> <p>DB9 connector (right angle) Bottom of the PCB.</p>	 <p>DB9 connector (straight) Bottom of the PCB.</p>

Fig: Various possible mounting for RS232 DB9 connector

Note: RS232 DB9 male connector is mounted on the top of the PCB board in the default configuration. Modification to the data line is required if the PCB DB9 mating connector is female or if mounted on the reverse side of the PCB board.

Specifications & Features

Data Communication

Type **Ethernet and RS232**

Interface

Connector **RJ45, D-sub 9 pins** (male/female)

Power Source

Input Voltage **5Vdc to 24Vdc** (standard version)
Up to 60Vdc (enhanced version)
Input Current ---
Power ---
Connector Screw terminal

Environment

Operating Temperature **0°C to 70°C** (standard version)
-40°C to 85°C (enhanced version)
Storage Temperature **-40°C to 85°C**

Size **40 x 40 x 18 mm,**
L x W x H (RS232 connector mounted on the top layer)

Weight **40g** (±0.5g)

Accessories Power cable from USB port (suitable for selected PC)



www.pic-control.com
PIC-CONTROL
sales@pic-control.com