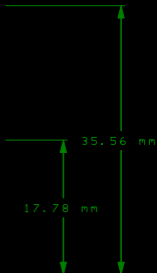
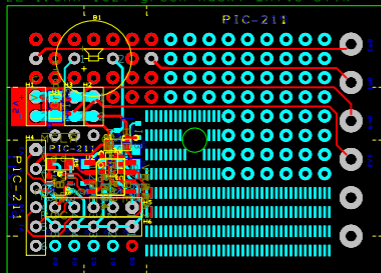


PIC-211

2L 1.6mm 1oz, green mask, white silk



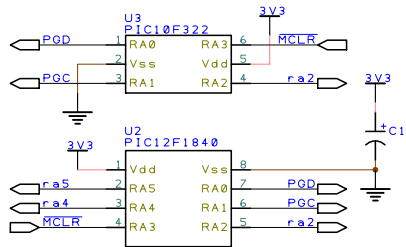
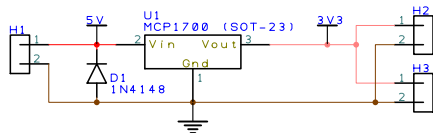
24.77 mm

49.53 mm

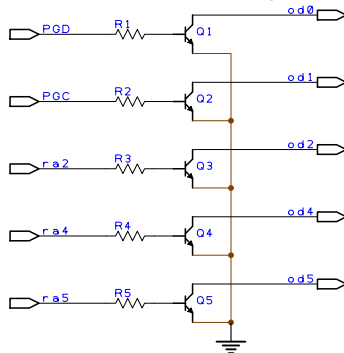
35.56 mm

17.78 mm

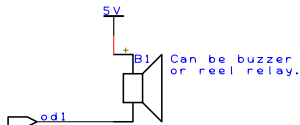
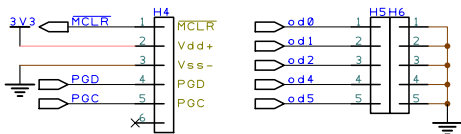
PIC-211



Default is open drain output.
Can be configured to LED out. input.
Ensure resistor in can bridge over npn's collector.



ra4.5 provision for crystal installation



Can be buzzer
or reed relay.